

RF Microwave Detector



Specifications

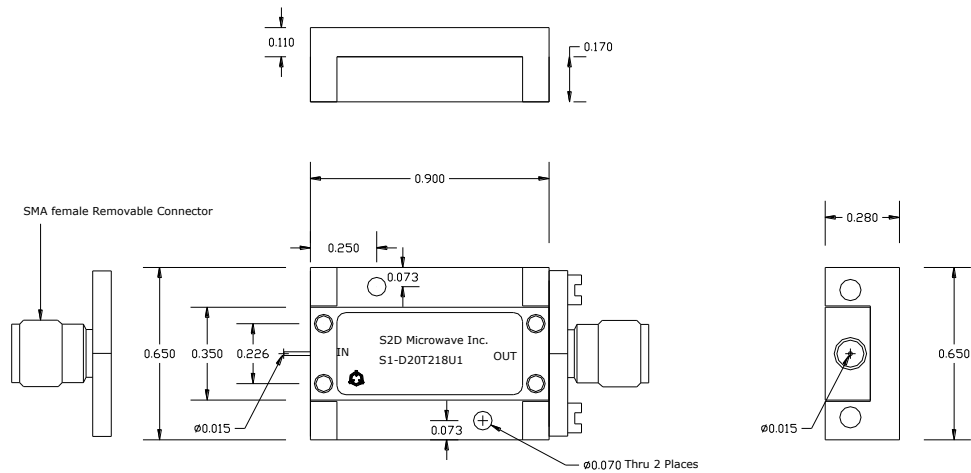
- ◆ RF Microwave shottky and tunnel diode detector
- ◆ Wide frequency range 0.5GHz to 40GHz
- ◆ Frequency response within ± 0.9 dB
- ◆ Negative and Positive output
- ◆ High sensitivity to 500mv
- ◆ Input power max. 100mW
- ◆ Video output capacitance varies from 10pf to 470pf based on your frequency specification
- ◆ Internal video protection

S2D Microwave Detector are very broad band and are available in rugged and slim packages. They are used in commercial, space and defense applications. We can build to your specifications. Contact us with your requirements and we will provide you with complete solution with quality service.

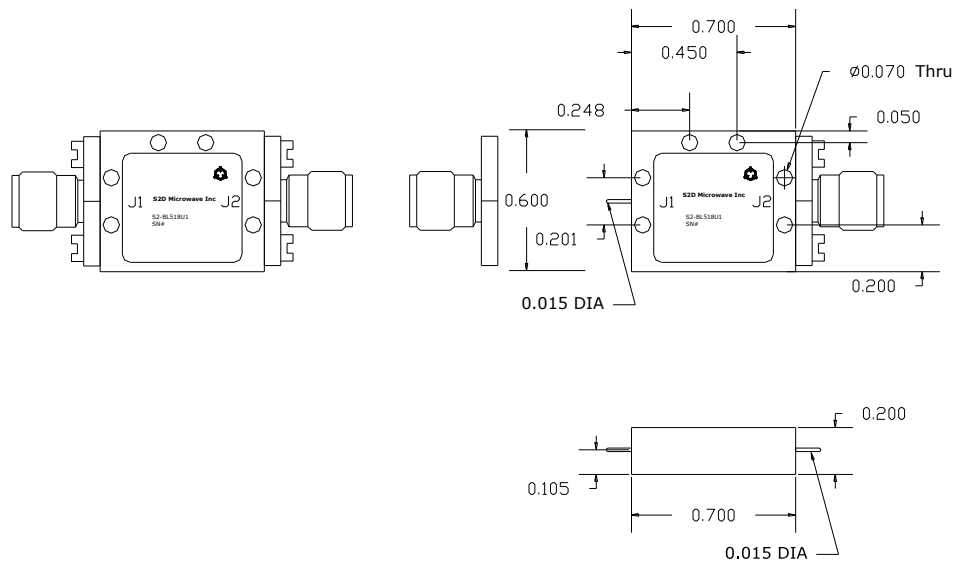
S2D Microwave, Inc. reserves all the rights to change any specification without notice..

10176 Judy Ave, Cupertino, CA-95014 USA Phone: 1-408-625-7862 Fax: 1-408 973-0644
Email: sales@s2dmicrowave.com Web: www.s2dmicrowave.com

Ultra Slim Detector S1 Package with connector



Ultra Slim Detector S2 Package with connector



All The above outline drawings are S2D Microwave's standard housing. They can be customized as connector package or surface mount drop-in package as per your requirements.



Space to defense microwave applications

To Order:

Send Enquiries or orders to :

Phone: +1 408 625-7862 Email: sales@s2dmicrowave.com

Payment Terms and Conditions:

All payment is due in full on or before 30 days after the date of shipment.

Warranty:

At S2D Microwave, Inc. we believe in customer satisfaction through excellence and we will provide the best customer service possible. S2D Microwave, Inc. will make every effort possible to make the product or devices perform as expected.

We believe in our success through yours.

S2D Microwave, Inc. products or devices are warranted against defect in workmanship and materials for a period of one year from the date of shipment. S2D Microwave, Inc. will repair products or devices that proves to be defective under proper use during the warranty period. S2D Microwave, Inc. will not repair or replace products that have not been proved to be defective and is in compliance with our stated warranty. We will not accept for credit and/or replace and/or refund products or devices that have been previously accepted. All orders placed with S2D Microwave, Inc. are non-returnable or non-cancelable unless otherwise previously agreed upon.

Return Policy:

The product return must be authorized by S2D Microwave, Inc. Once authorized by S2D Microwave, Inc. a Return Material Authorization (RMA) will be provided.

10176 Judy Ave, Cupertino, CA-95014 USA Phone: 1-408-625-7862 Fax: 1-408 973-0644
Email: sales@s2dmicrowave.com Web: www.s2dmicrowave.com

© 2012 S2D Microwave, Inc. All Rights Reserved.