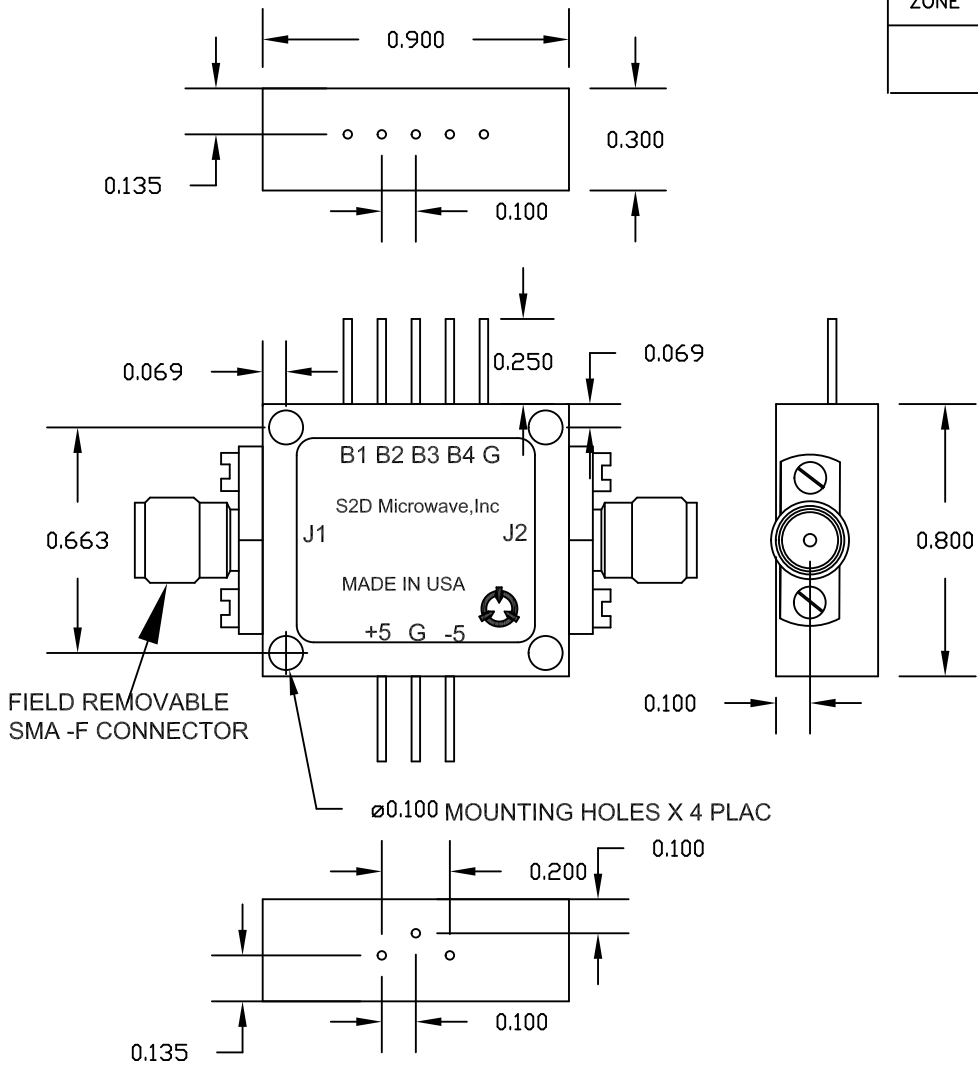


REVISIONS				
ZONE	REV	DESCRIPTION	DATE	APPROVED
	A	INITIAL RELEASE	08/11/2012	




SPECIFICATION

FREQUENCY 7.0- 9.0GHz
 VSWR: 2:1
 INSERTION LOSS..... 3.0dB Typ
 ATTENUATION CONTROL 4 BIT BINARY
 SWITCHING SPEED 120ns Typ
 IMPEDANCE 50 OHM
 INPUT POWER(MAX) 20dBm @ +25°C
 PEAK POWER 1 WATTS
 (1µSEC PULSE, 0.05% DUTY CYCLE)
 ATTENUATION ACCURACY ± 10%
 POWER SUPPLY +5 & -5 V DC @ 150 Ma
 ATTENUATION CONTROL HI - ATTENUATION ON
 LO - INSERTION LOSS
ENVIRONMENTAL RATINGS:
 TEMPERATURE: -40°C TO +85°C (OPERATING)
 -65°C TO +125°C (STORAGE)
 SHOCK: MIL-STD-202F, METHOD 213B COND, B

Bit	Attenuation
B1	0.5 dB
B2	1 dB
B3	2 dB
B4	4 dB

NOTE: Specifications are subject to revision or change
 Units are designed to meet the environmental rating.
 For environmental testing please contact sales@s2dmicrowave.com.

All Dimensions in Inches Tolerances: Fractions Decimals Angles - ±0.01 ±3° ±0.005	
Model# S3-AT205579	
Material: AL Alloy 6061-T6 per QQ-A-250/11	Plating: Electroless nickel per MIL-C-26074

 S2D Microwave Inc. www.s2dmicrowave.com			
OUTLINE DRAWING DIGITAL PIN ATTENUATOR			
SIZE	FSCM NO.65BW0	DWG NO. 100-912-S3AT-01	REV
SCALE: None		SHEET 1 of 1	